

THE BELGIAN EXAMPLE

Karel Buijsse, Strategic Product Manager, e-Bo enterprises, and
Commander S.G. Kurt De Winter, Belgian Navy.



Against all odds

Security in the maritime domain



Karel Buijsse
Strategic Product Manager

karel.buijsse@ebo-enterprises.com
www.linkedin.com/in/karelbuijsse



Kurt De Winter
CO Coastal Security & Harbour Protection

kurt.dewinter@mil.be
www.linkedin.com/in/kurt-de-winter



Technology integration of IT, OT & software systems spanning the digital transformation journey



e-BO
OFFSHORE



e-BO
CORPORATE



e-BO
PUBLIC SAFETY

Networking

Security

Control room software

Private Cloud infrastructure

Private WAN/LTE



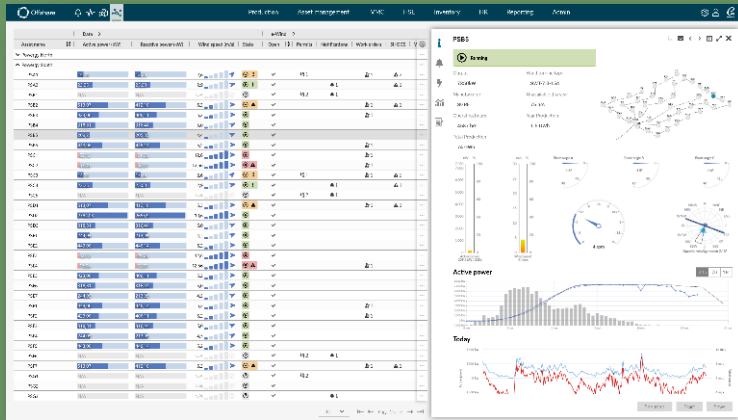
Delivering services
in 280+ locations
across Europe

Headquarters
Belgium

Offices
Germany
France
UK



Offshore collaboration that connects people, data and processes on a secure software platform
Efficient processes, valuable insights and minimized risk



590

WIND
TURBINES

388

SUBSEA
CABLES

20k

ACTIVATED
PERSONS

250k

BIG DATA
SIGNALS

>6500MW

MANAGED
ASSETS

22

SUBSTATIONS

500

VESSELS

100K

UPLOADED
CERTIFICATES

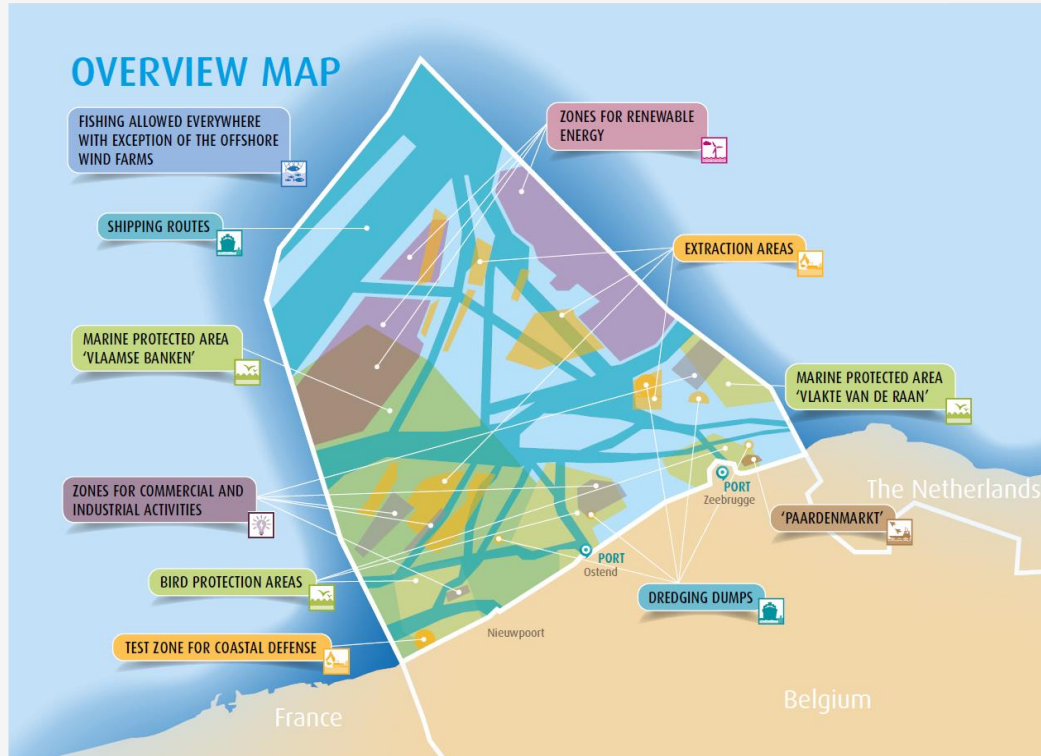
Offshore Customers & Partners



GE Renewable Energy

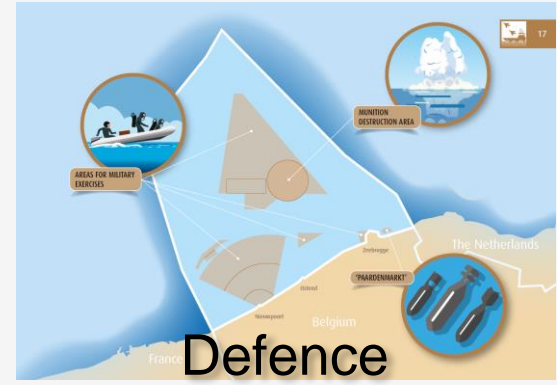
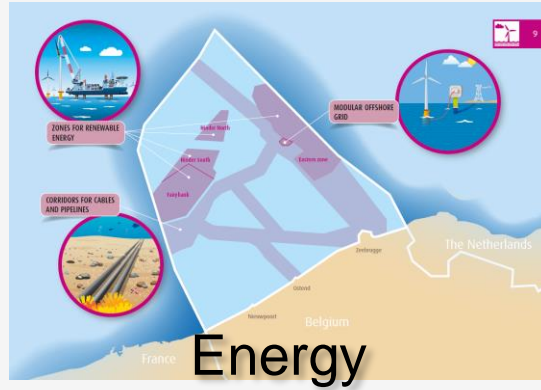
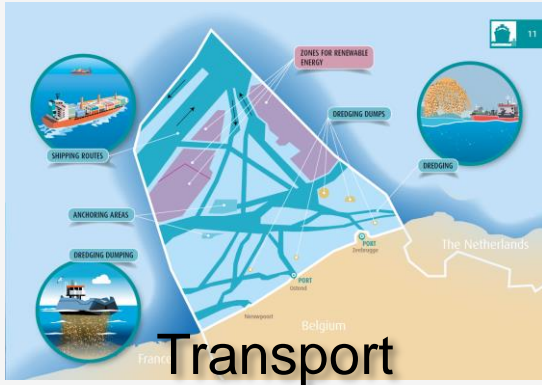


The Belgian EEZ is a complex & densely operated environment



Small	3,600 km ² (0,5% North Sea)
Busy movements/year	55,000 ship
Responsibilities	17 government institutions
Activities	nature conservation energy production shipping dredging activities fishing aquaculture sand extraction coastal protection military activities tourism protection of cultural heritage research commercial activities industrial activities

Marine Spatial Planning - needs to be enforced



Maritime Information Exchange - MIK



Safety
MRCC



Security
MIK



Belgian
Navy



Police

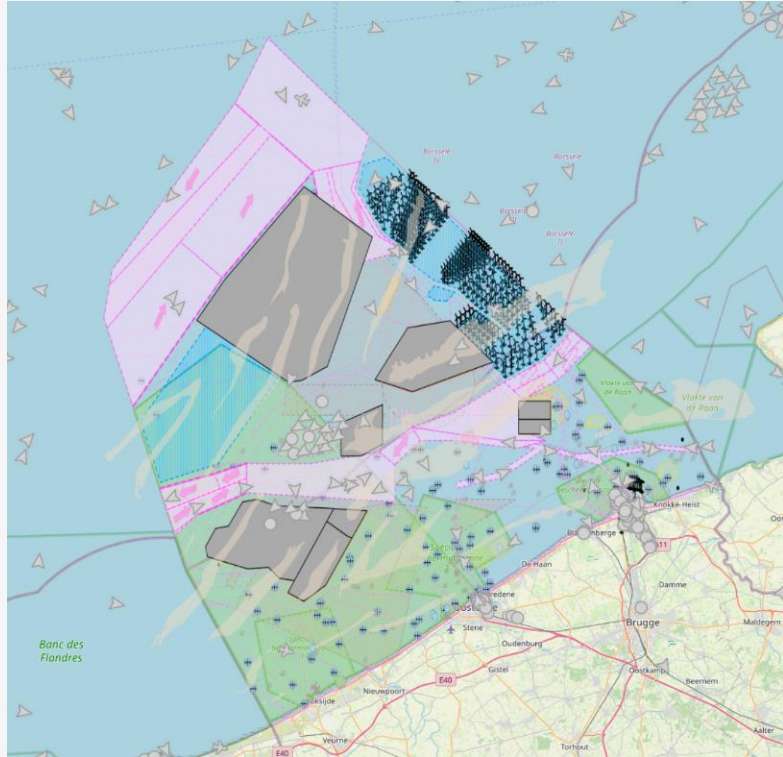


Customs



Fod
Mobility

Need for one application to jointly run maritime domain management

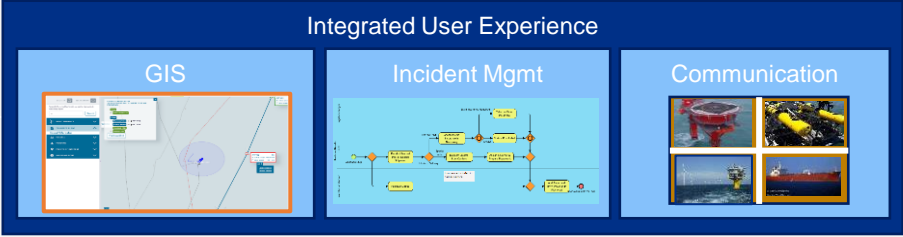


Understanding events, activities & circumstances within and associated with the maritime environment that are relevant for all maritime stakeholders

Providing the intelligence and means to take action & communicate appropriately and timely

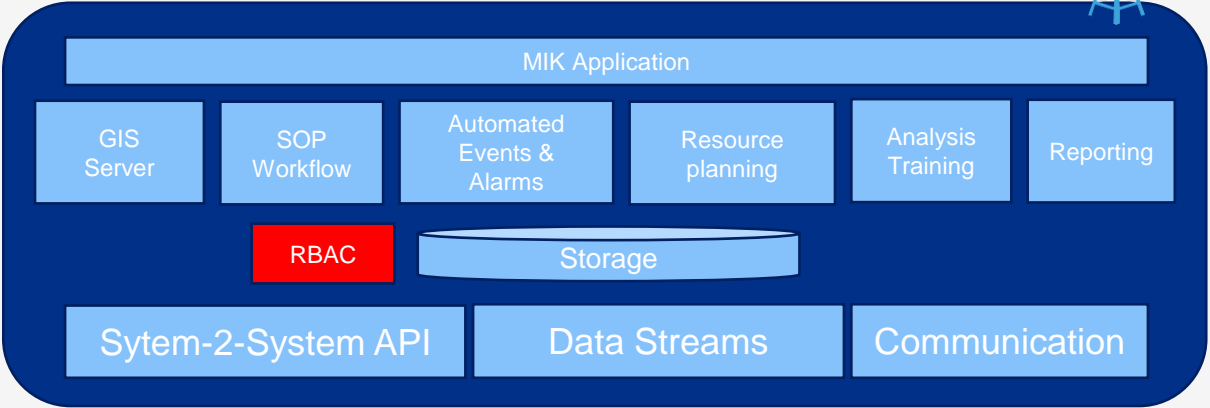
Delivering this in a single application vs 20+ stovepipe applications used today

The solution



DEF

POL



CUS

MOB



SRK

EMSA

IHS

Offshore Wind

Offshore Cameras

Telephone

Email

MDK

Volpe

VLIZ

SSN-B

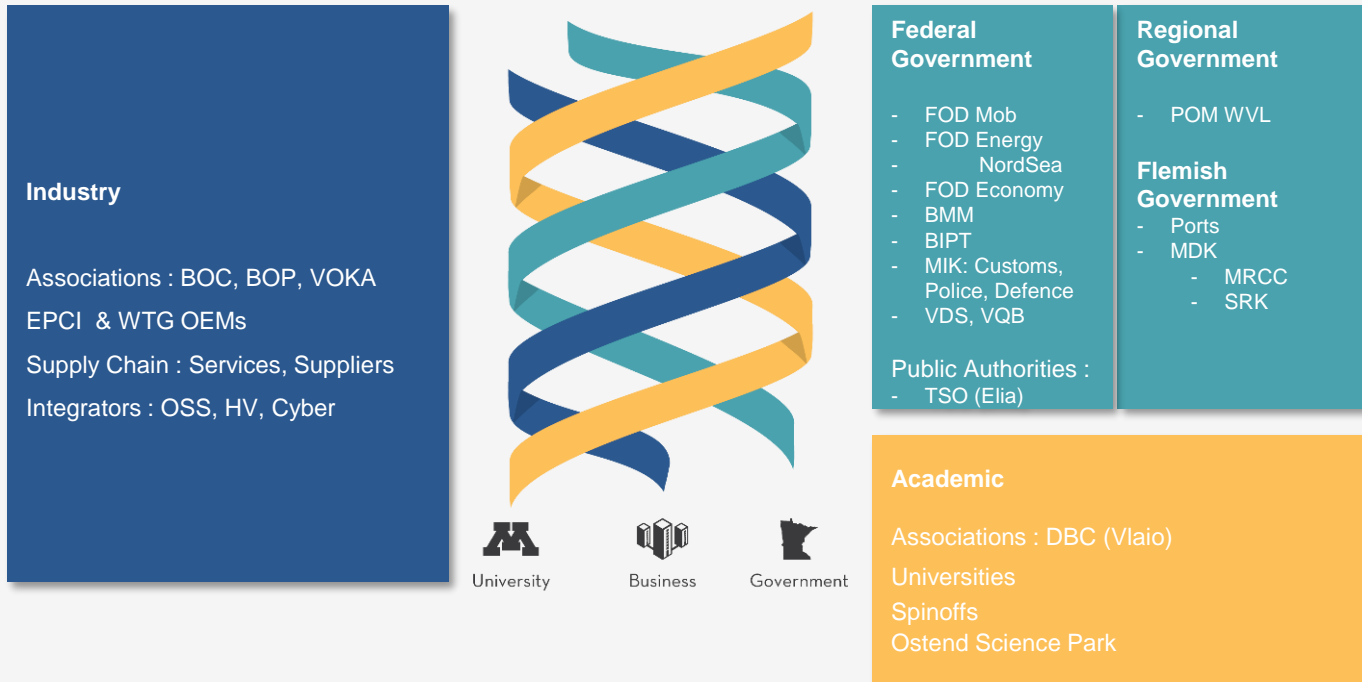
Radar

VHF

SMS

Lessons learned

Nurture relationships – the triple helix strategy in a complex eco system



Lessons learned



Find the wins

Wind farm intrusion prevention support by coast guard \leftrightarrow perimeter camera or radar access

Verifying sand extraction taxation reports verification through behavioral analysis of dredging operations

Automatic reporting & delivery of proof for traffic or environmental violations

Be flexible

Getting data access requires agreements and take time

Joint agile development is key to demonstrate progress

Looking forward



Need for further automation and detailed detection

Inferring illegal activities through abnormal behavior detection (machine learning)

Small contact detection (border protection, illegal activities)

Possible solutions will be investigated with stakeholders and academia

More and diverse sensors - cameras, radar, vibration detection

Expand sensors to patrol vessels - both at sea & in the air

Sensor fusion – combine information from multiple and diverse sources

Where to find us



Wind
EUROPE

**ELECTRIC
CITY 2021**
23-25 NOVEMBER
COPENHAGEN



stand C2-C13&C14

BE

IEPER HEADQUARTERS

Ter Waarde 60 , 8900 Ieper, Belgium
T +32 57 23 02 70 / F +32 57 23 02 71
info@ebo-enterprises.com
sales@ebo-enterprises.com

BE

OOSTENDE

e-BO Industries NV,
Wetenschapspark 2,
8400 Oostende, Belgium

FR

NANTES

e-BO Industries SAS,
22 Mail Pablo Picasso,
4400 Nantes, France

DE

HAMBURG

e-BO Offshore GmbH,
Kallmorgen Tower, Willy-Brandstraße 23-
25,
20457 Hamburg, Germany

UK

SOUTH CAVE

e-BO Industries LTD,
Westwood House Annie Med Lane
South Cave HU15 2HG, United Kingdom